



HAVIES

SECHLT

COMMUNITY, NATURE, ADVENTURE

SAVOUR THE SPECTACULAR SUNSHINE COAST



A COLLECTION YOU'LL LOVE, INSIDE AND OUT

Nestled in the inviting seaside community of Sechelt, The Havies is a brand-new collection of 99 spacious single-family homes. These well-planned residences offer a range of intelligent and inspired design details, including timeless architecture, smart home features and thoughtful open layouts that offer exceptional space for family living. Outside the homes the stunning natural environment surrounds you, with the ocean just minutes away and vast emerald forests to explore and enjoy.

This is a community you'll love to call home.

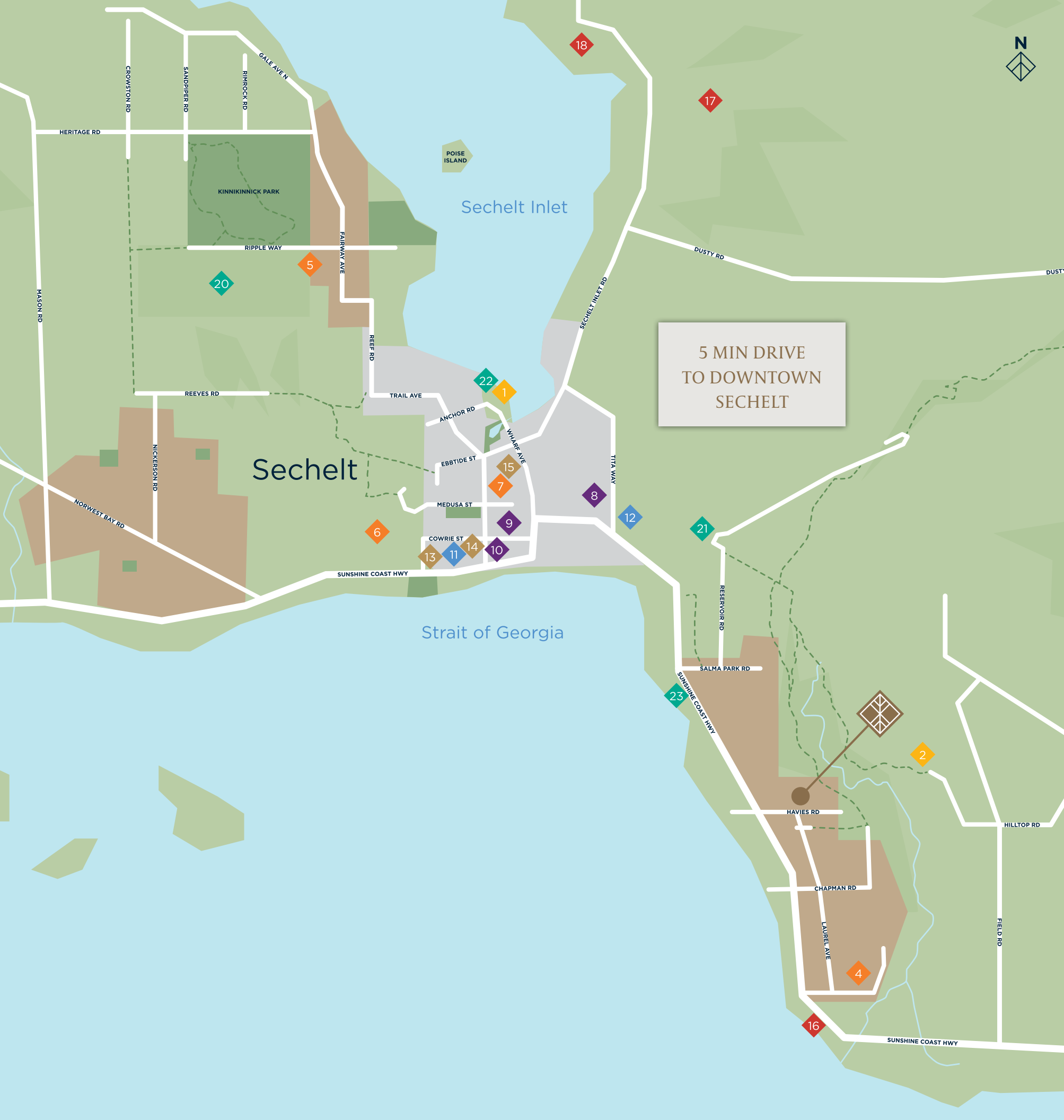


NATURE'S DOOR STEP



MODERN LIFESTYLE





AN INVITING COMMUNITY

Sechelt is brimming with small-town charm and bigger city services. From diverse restaurants to modern cafés, artisan-run shops to colourful galleries, there’s so much to see, do and savour.

EVERYDAY ESSENTIALS

◆ **TRANSPORTATION**

- 1 Harbour Air Seaplanes
- 2 Sechelt Airport
- 3 Langdale Ferry Terminal

◆ **EDUCATION**

- 4 Davies Bay Elementary
- 5 Kinnikinnick Elementary
- 6 Ecole Chatelech Secondary School
- 7 Capilano University
Sunshine Coast Campus

◆ **HEALTH CARE**

- 8 Sechelt Hospital
- 9 Sechelt Medical Clinic
- 10 Cowrie Medical Clinic

◆ **SHOPPING**

- 11 Trail Bay Mall
- 12 Tsain-Ko Centre

◆ **FOOD AND DRINK**

- 13 Shift Kitchen & Bar
- 14 El Segundo
- 15 Lucky's BBQ House

LOCAL HIGHLIGHTS

◆ **TOURIST ATTRACTIONS**

- 16 Davis Bay
- 17 Burnett Falls Park
- 18 Porpoise Bay Provincial Park

◆ **RECREATION**

- 19 Sunshine Coast Golf and Country Club
- 20 Blue Ocean Golf Club
- 21 Sunshine Coast Motocross Compound
- 22 Halfmoon Sea Kayaks
- 23 Sol Spa
- 24 Farm Ventures Petting Zoo
- 25 Sunshine Coast Museum and Archives

VANCOUVER'S SCENIC BACKYARD

EASY ACCESS BY
SEAPLANE – 20 MINS
YACHT – 30 MINS
BC FERRY HORSESHOE BAY-LANGDALE – 40 MINS
LANGDALE-SECHELT BY CAR – 33 MINS





The collection of homes is located in a serene forested area mid-way between downtown Sechelt and the popular community of Davis Bay, offering close access to all the essential services, amenities and attractions families need to grow and thrive.

SITE PLAN

- PLAN A**
3 BED, 3 BATH
1,500 SQ FT
- PLAN B**
3 BED, 3 BATH
1,500 - 6,500 SQ FT
- PLAN C**
6 BED, 6 BATH
2,450 SQ FT
- PLAN D**
5 BED, 6 BATH
2,450 SQ FT
- PLAN E**
6 BED, 6 BATH
2,450 SQ FT
- PLAN F**
5 BED, 6 BATH
2,450 SQ FT





PLAN A – LIGHT

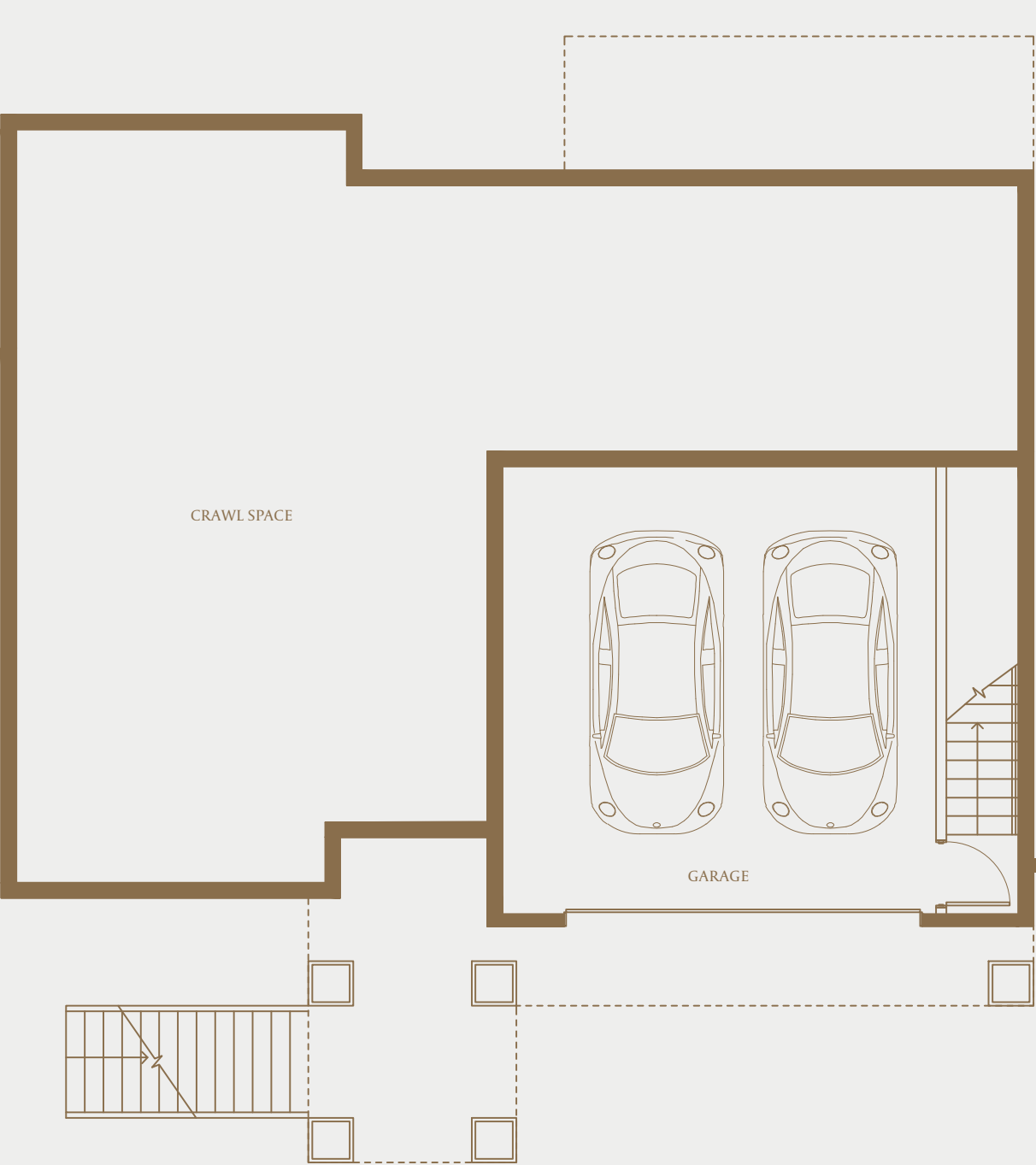


PLAN A – DARK

PLAN A

3 BED, 3 BATH
1,500 SQ FT

LOT
5,500 - 6,500 SQ FT



LOWER



MAIN



PLAN B – LIGHT

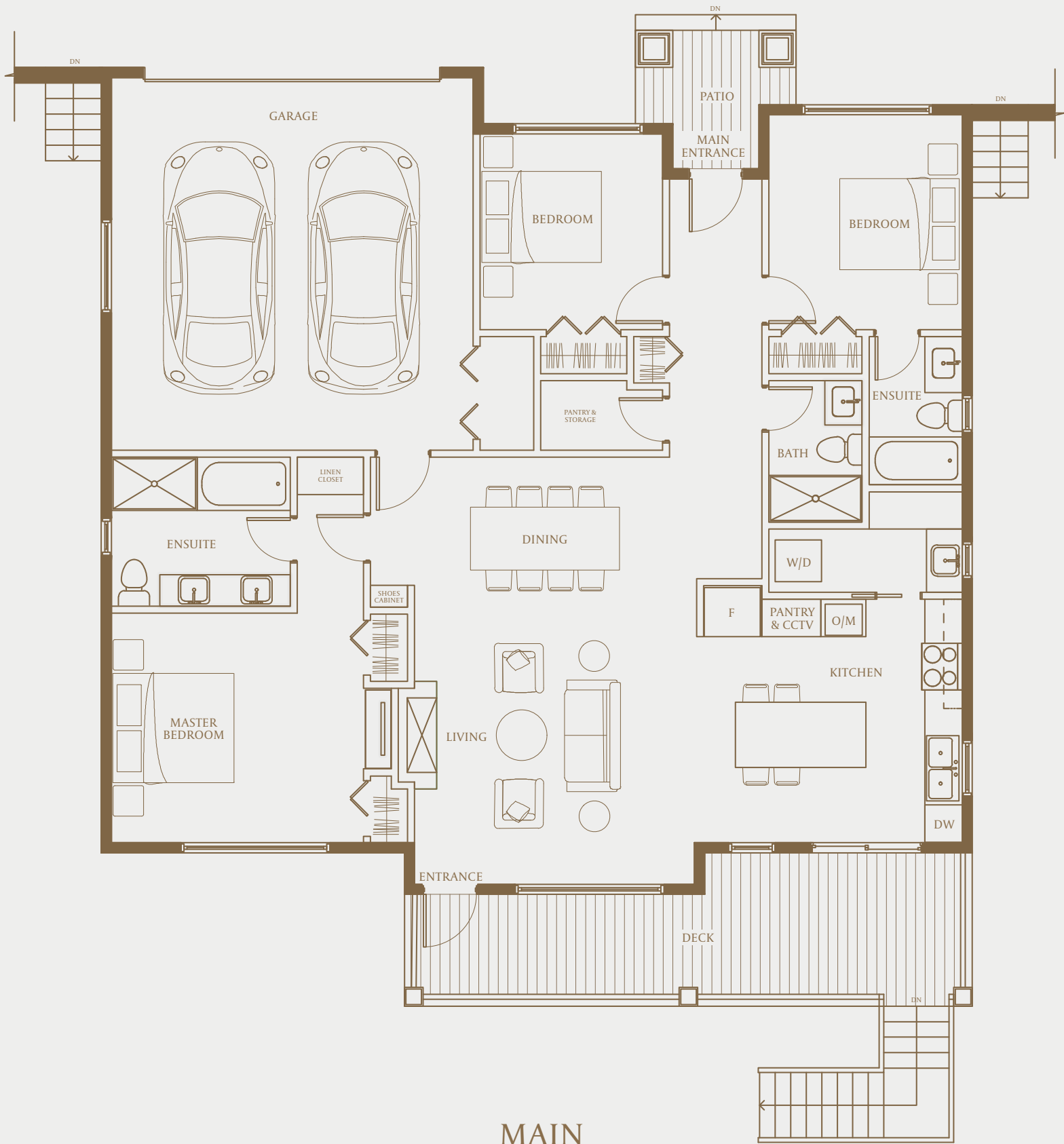


PLAN B – DARK

PLAN B

3 BED, 3 BATH
1,500 SQ FT

LOT
5,500 - 6,500 SQ FT





PLAN C – COOL

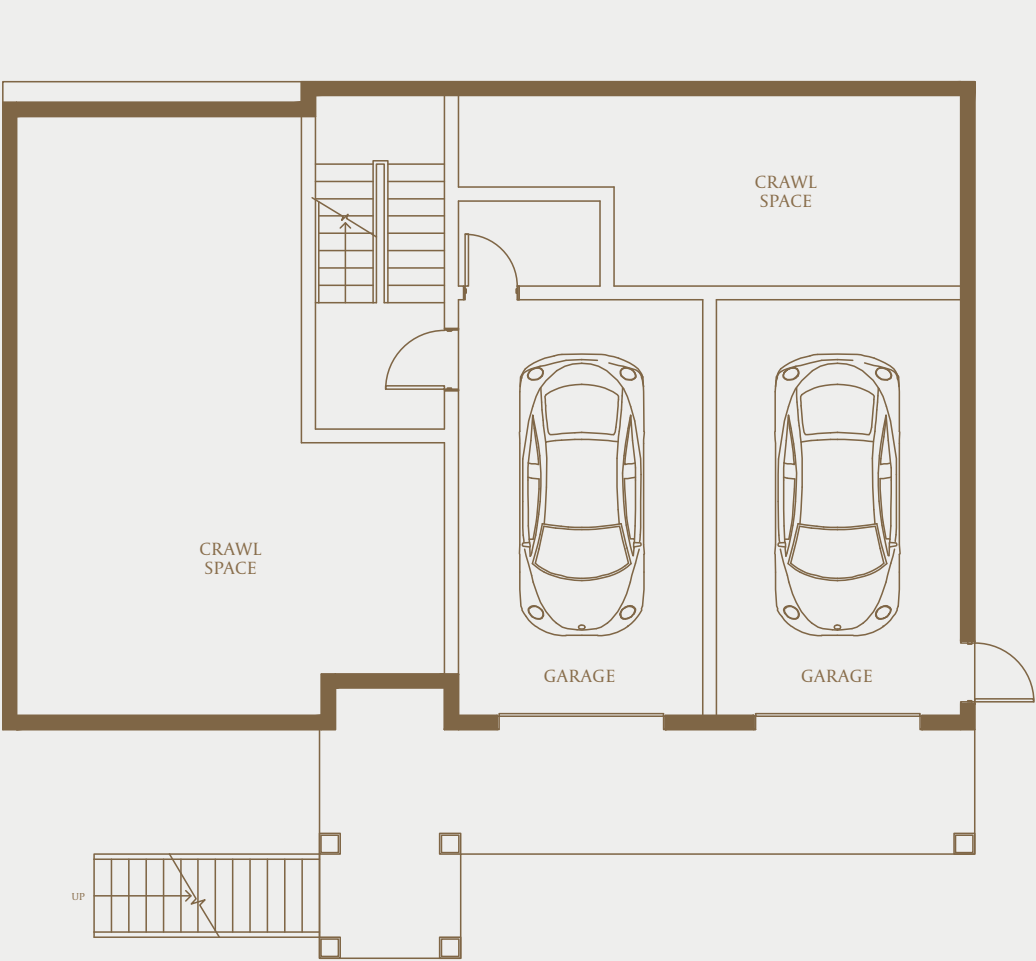


PLAN C – WARM

PLAN C

6 BED, 6 BATH
2,450 SQ FT

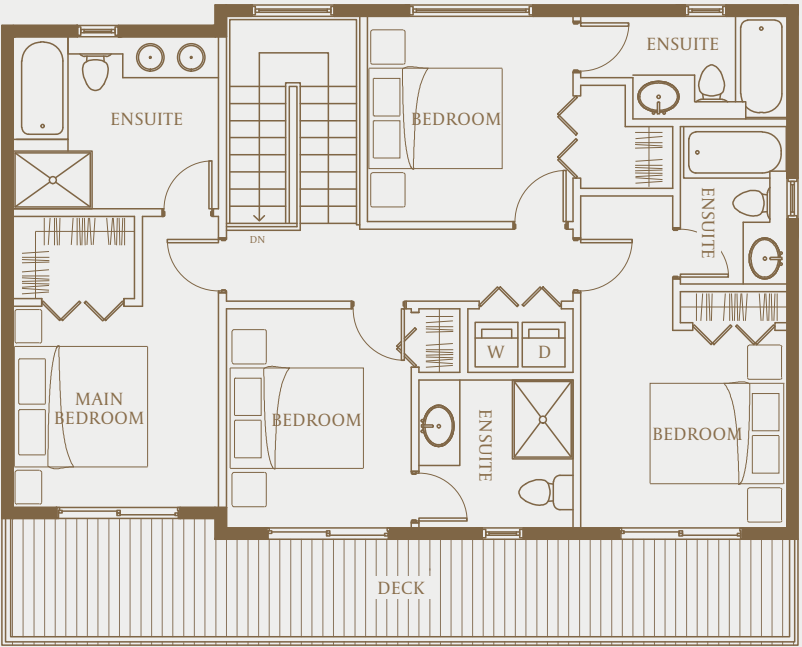
LOT
6,500 - 7,300 SQ FT



LOWER



MAIN



UPPER



PLAN D – COOL

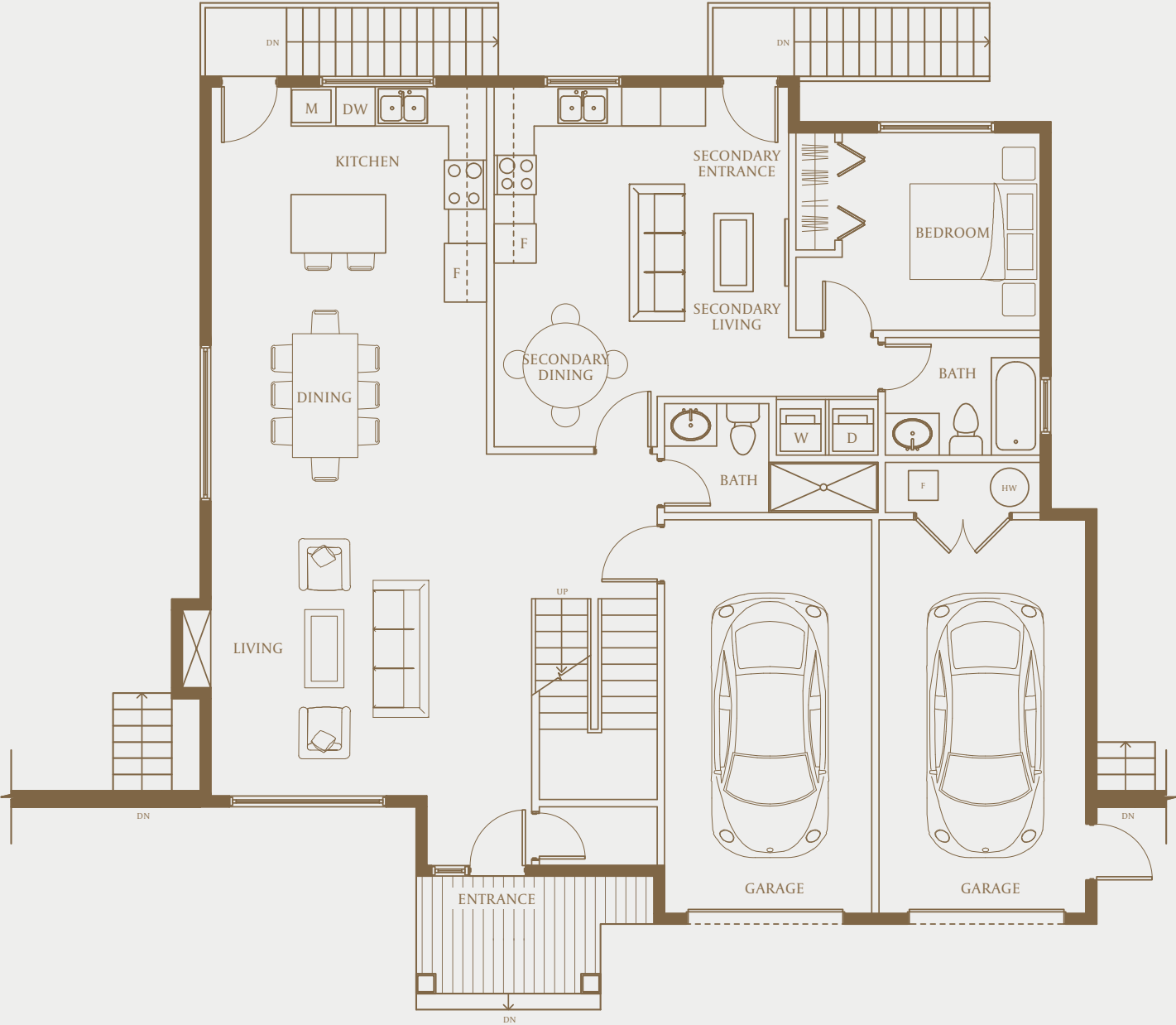


PLAN D – WARM

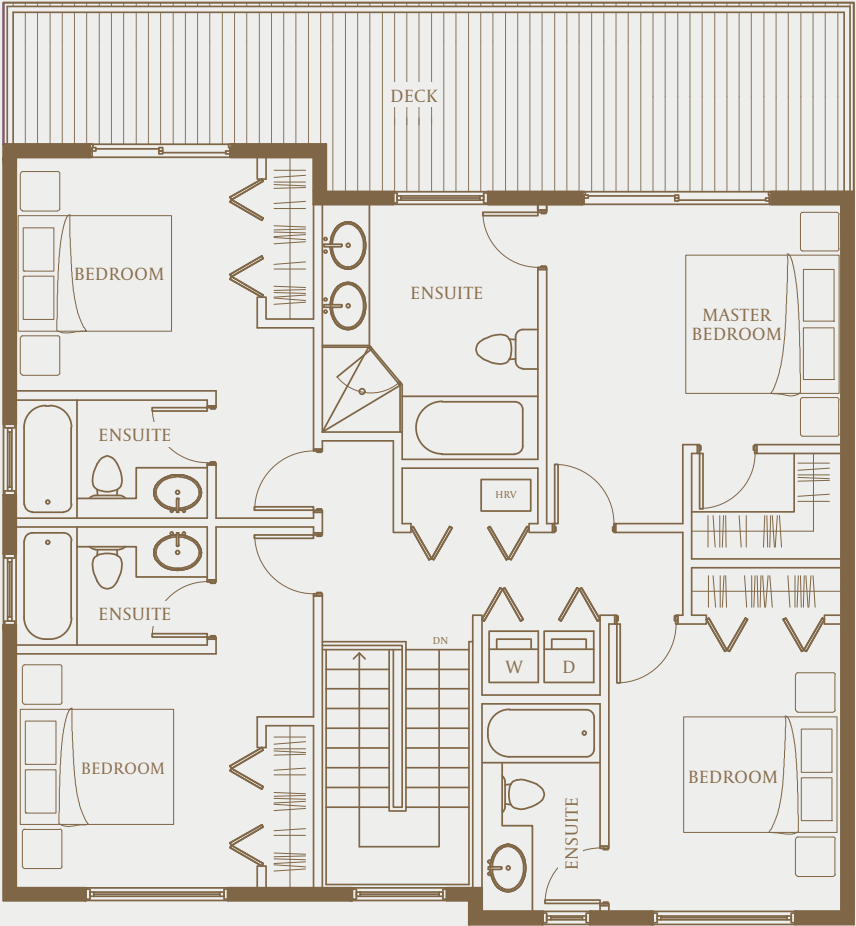
PLAN D

5 BED, 6 BATH
2,450 SQ FT

LOT
6,500 - 7,800 SQ FT



MAIN



UPPER



PLAN E – COOL

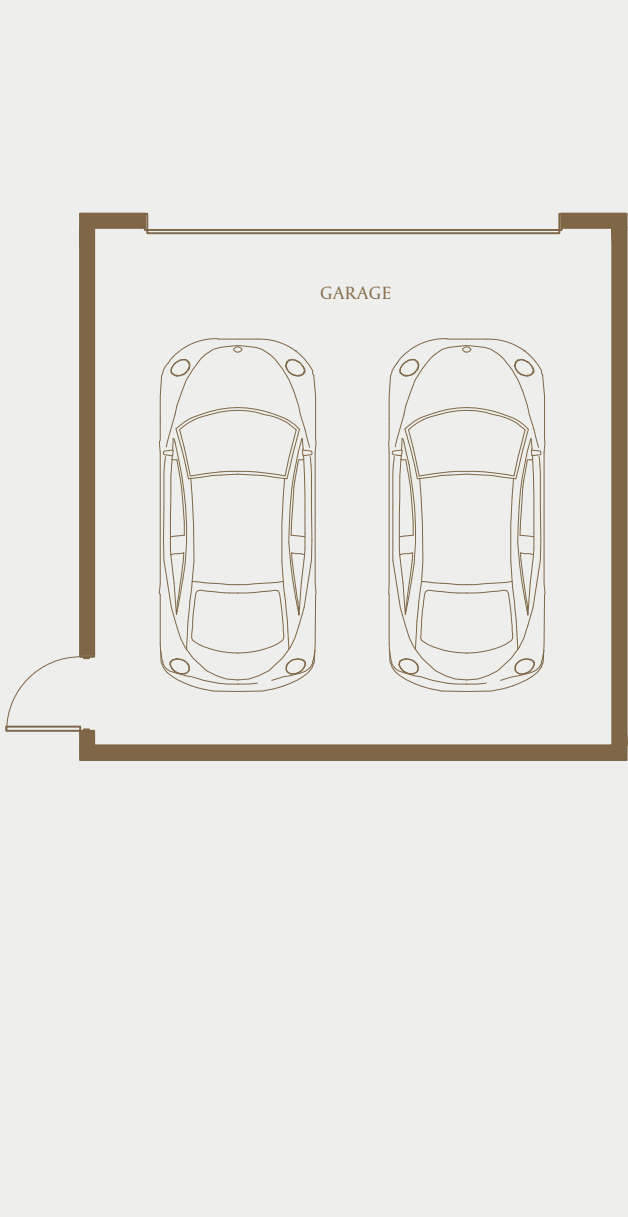


PLAN E – WARM

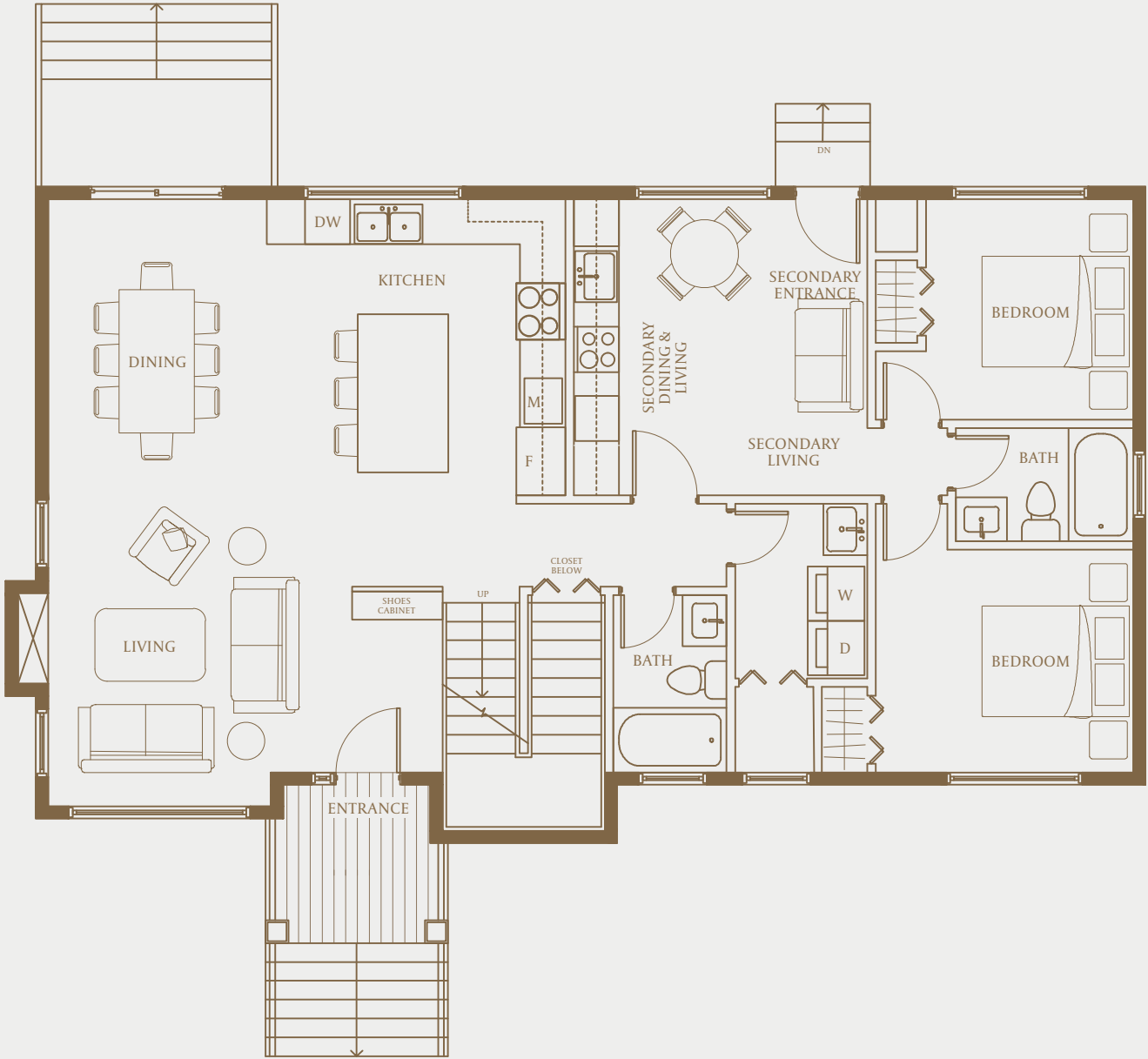
PLAN E

6 BED, 6 BATH
2,450 SQ FT

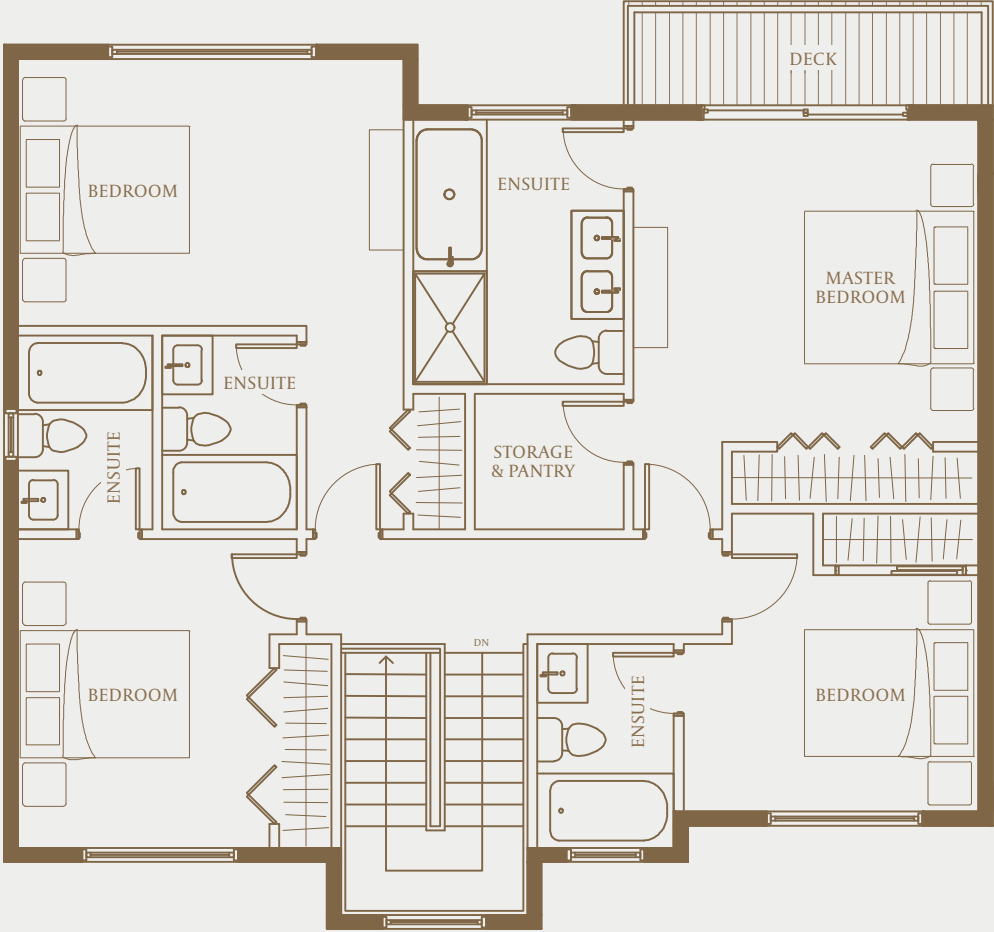
LOT
9,700 - 10,500 SQ FT



DETACHED GARAGE



MAIN



UPPER



PLAN F – COOL

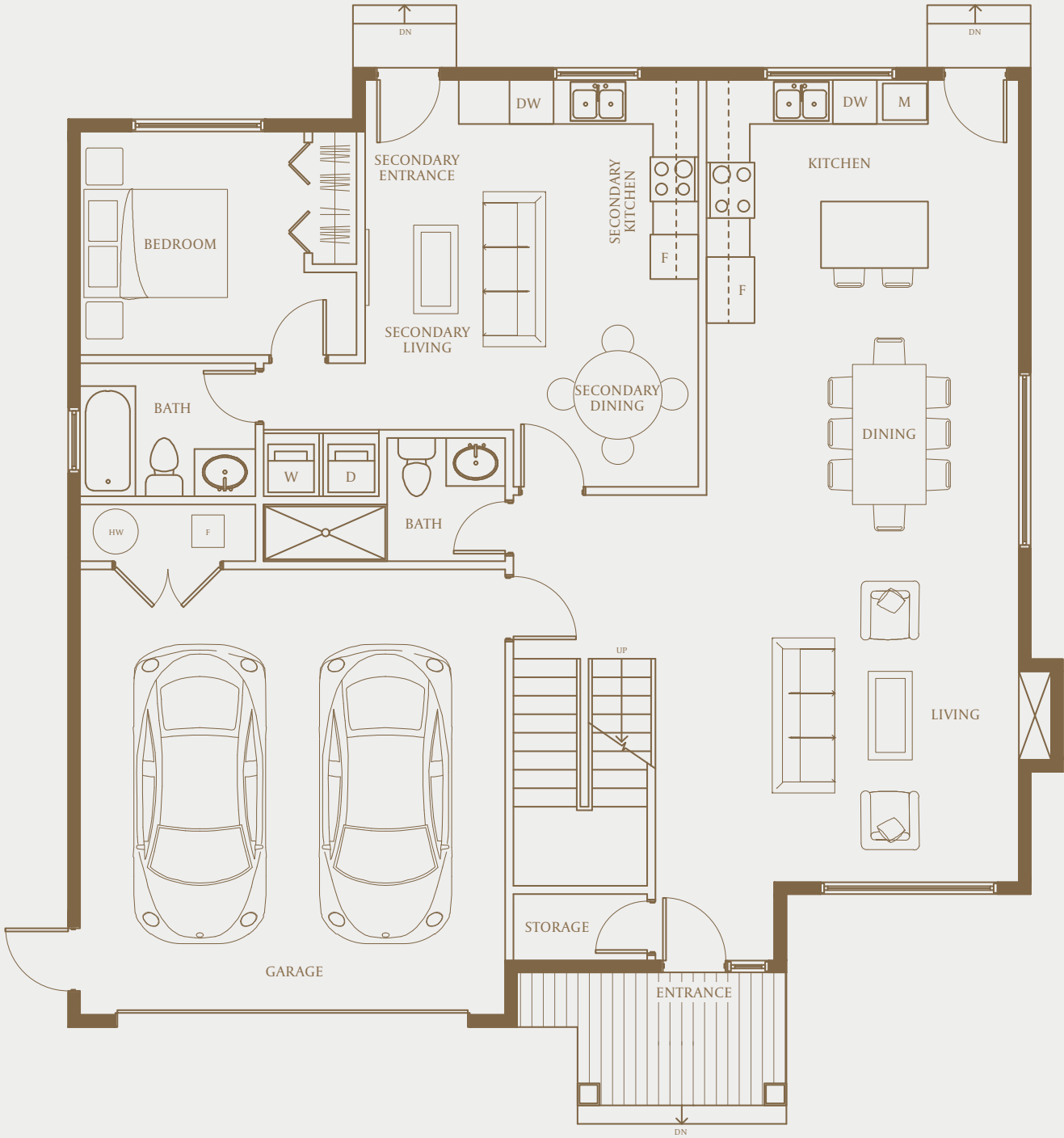


PLAN F – WARM

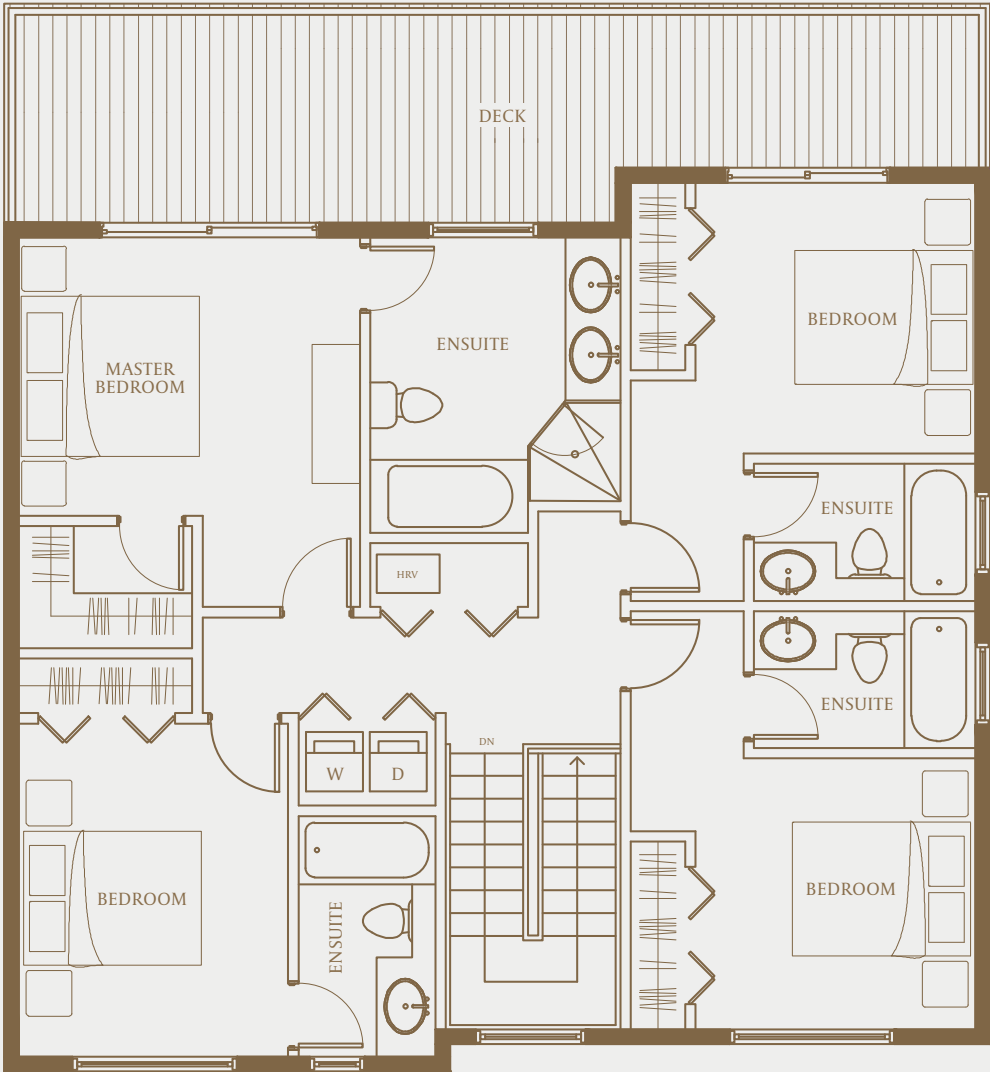
PLAN F

5 BED, 6 BATH
2,450 SQ FT

LOT
6,500 - 8,700 SQ FT



MAIN



UPPER

DEFINED BY CONTEMPORARY DESIGN

The kitchens are a highlight, featuring high-end Bosch appliances, including a gas range. Sleek quartz counters complement the contemporary feel, while subtle under-cabinet lighting elevates the carefully considered design.



Designed by MRP Design Consultants, the interiors of the homes at The Havies are carefully planned and detailed to maximize space and create an airy, open living experience for functional and stress-free family living. The homes are defined by contemporary design and high quality finishes, with two designer-selected colour schemes that enable you to tailor the home to your taste. Oversized double-glazed windows and generous nine-foot ceilings contribute to the expansive sense of space.





SEAMLESS TECHNOLOGY FOR A SMARTER HOME

The homes feature a series of innovative integrated features using the MySmartH app that add convenience, security, and peace of mind for homeowners. This also allows for keyless passcode entry, and owners can provide temporary codes to friends and service providers. Best of all, the system is compatible with Amazon Alexa and Google Home, meaning homeowners can control the devices simply by speaking.

LASTING INVESTMENT VALUE AND MANAGEMENT SERVICES

The Havies is one of the only new collections in Canada offering move-in ready homes for buyers, providing unique optional packages, selected and staged by a professional interior design team as part of the purchase plan. This offer simplifies the process and offers access to high-quality designer furniture at less than retail prices.



FEATURES

CONTEMPORARY DESIGN AND SMART HOME TECHNOLOGY

- The Havies is an inviting collection of move-in-ready single-family homes just minutes from downtown Sechelt, surrounded by nature and a short stroll to the beach
- Tasteful contemporary architecture is paired with timeless interior design and detailing to create family-friendly homes that function exceptionally well for everyday living and special occasions alike
- Advanced smart home features include a smart door lock, doorbell, thermostat, water and gas monitors, adding convenience and peace of mind through intuitive app-based control over your environment
- A unique optional furniture package enables owners to purchase furnishings custom-selected for their space and taste, taking the hassle out of moving and buying new furniture
- Optional property management offering by Homei Properties enables owners to maximize the value of their home investment through managed short- and long-term rental

CAREFULLY PLANNED HOME DETAILS

- Minimum 9-foot ceilings in all homes creates a generous sense of space and flow
- Double-glazed windows
- Two designer-selected colour palettes—light and dark—enable owners to tailor homes to their taste
- In-floor heating system adds efficient and consistent temperatures throughout the home
- Laminate hardwood flooring anchors the home with a natural tone (Option to change to carpet in bedrooms, prices to be negotiated)
- Gas fireplace in living room creates an inviting focal point while warming the space
- Energy-efficient lighting
- Durable exterior materials including cement board and stucco
- EV rough-in reserved parking stalls

CONTEMPORARY KITCHENS

- Quartz composite countertops with waterfall island and matching backsplash
- Double bowl stainless steel under-mount sink with pull-out faucet
- Clean and contemporary flat-panel laminate cabinets
- Subtle and sophisticated under-cabinet accent lighting
- Soft-close doors and drawers

SERENE ENSUITES AND BATHROOMS

- Floating vanities (with legs) and quartz composite countertops create a soothing contemporary aesthetic
- Under-cabinet LED lighting adds to the elevated ambiance
- Frameless glass shower door for the master ensuite with Grohe shower head and faucet
- Other bathrooms include bathtubs with shower curtain rods
- Water-efficient Kohler toilets
- LED mirror in all ensuites and bathrooms
- Attractive wallpaper in powder room

SMART HOMES WITH INTEGRATED TECHNOLOGY

- High speed internet
- Telephone network ready
- CAT6 cable
- Smart Home system, with smartphone app-based controls, integrated into the home design, including:
 - Smart Door Lock
 - Video Doorbell
 - Wireless Security Devices
 - Wifi security alarm system host
 - Wireless motion detector
 - Wireless window/door sensor
 - Wireless remote control
 - Smart Thermostat
 - Smart Water Valve
 - Leak Detector
 - Smart Gas Valve
 - Smart 3-Way Switch
 - Smoke & Carbon Monoxide Detector



MEhome.com

200-6751 Westminster Hwy, Richmond, BC V7C 4V4

24 Hours Service Line(MEhome Vancouver): 778-888-3888